



CHATTERTON | REES

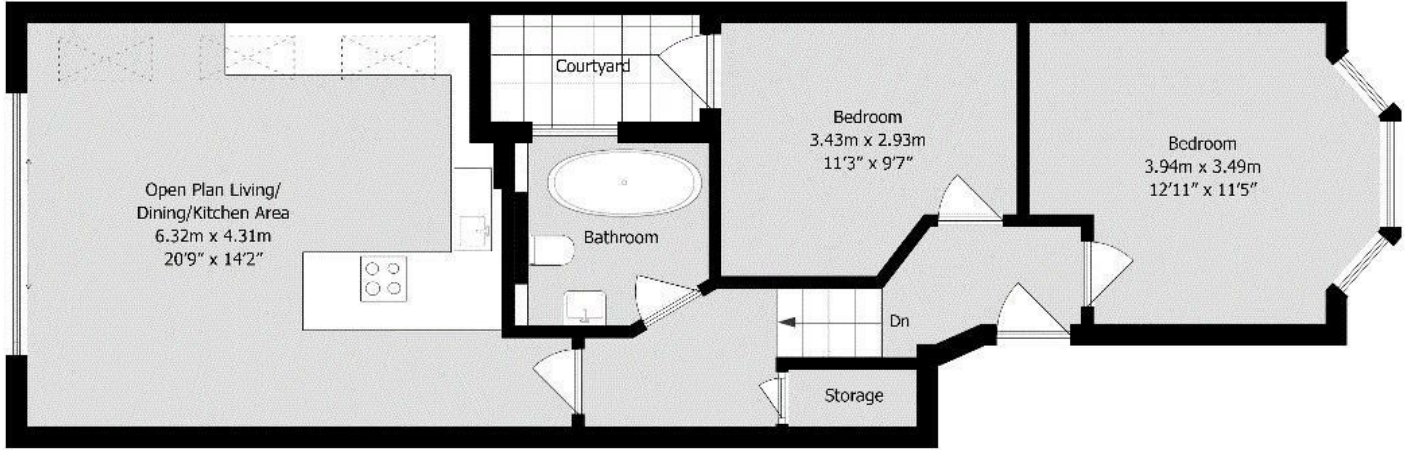


165 Stependale Road, London, SW6 2PR

Asking price £800,000

This beautifully renovated 2 bedroom garden flat is a must see. The lateral accommodation is arranged along the ground floor and flows perfectly. With the two bedrooms at the front of the flat with a stunning modern bathroom in the middle of the flat. Leading through the hallway you reach the open plan kitchen living room with an outstanding kitchen which really is the centre piece of this flat. The floor to ceiling glass sliding doors open up onto the garden which really does become an extension to the living room. This flat is perfect for entertaining and hosting.

Floor Plan



Approximate gross internal floor area 64 sq m/ 689 sq ft

Area Map



Energy Efficiency Graph

Energy Efficiency Rating		
	Current	Potential
Very energy efficient - lower running costs		
(92 plus) A		
(81-91) B		
(69-80) C		
(55-68) D		
(39-54) E		
(21-38) F		
(1-20) G		
Not energy efficient - higher running costs		
England & Wales EU Directive 2002/91/EC		
Environmental Impact (CO ₂) Rating		
	Current	Potential
Very environmentally friendly - lower CO ₂ emissions		
(92 plus) A		
(81-91) B		
(69-80) C		
(55-68) D		
(39-54) E		
(21-38) F		
(1-20) G		
Not environmentally friendly - higher CO ₂ emissions		
England & Wales EU Directive 2002/91/EC		

These particulars, whilst believed to be accurate are set out as a general outline only for guidance and do not constitute any part of an offer or contract. Intending purchasers should not rely on them as statements of representation of fact, but must satisfy themselves by inspection or otherwise as to their accuracy. No person in this firm's employment has the authority to make or give any representation or warranty in respect of the property.